

LEGEND	
(F) 2A 10BC FIRE EXTINGUISHER. G.C. INSTALL EITHER ON WALL SURFACE, COLUMN, OR ALUM. MULLION. MTG. HT.=3'-6" A.F.F TO TOP OF EXTINGUISHER.	(16) THE GENERAL CONTRACTOR TO PROVIDE LIGHT FRAME TRUSS TYPE CONSTRUCTION IDENTIFICATION SIGNAGE PER FAC 69A-60.0081.
(*) PROVIDE TACTILE EXIT SIGNS AT ALL EXITS AS REQUIRED BY NFPA 101 SECTION 7.10.1.3. MOUNT SIGNAGE AT 60" A.F.F. TO CENTERLINE OF SIGN.	(K) KNOX BOX (F.D. KEY BOX)
(E) EXIT SIGN WITH BATTERY BACKUP. SEE SHEET E3 LIGHTING PLAN	→ EXIT DIRECTION OF EGRESS
TD = TRAVEL DISTANCE	

1/8" = 1'-0"

FLOOR PLAN

- REFER TO STRUCTURAL DRAWINGS FOR ALL DETAILS AND REQUIREMENTS REGARDING FOUNDATIONS, WALL REINFORCING, BOND BEAMS, LINTELS, AND ROOF FRAMING.
- REFER TO CIVIL DRAWINGS FOR LOCATIONS AND DETAILS OF SIDEWALKS, PIPE GUARDS, ETC., AS WELL AS FINISH FLOOR ELEVATION AND EXTERIOR FINISHED GRADES AROUND THE BUILDING.
- INSTALL 6" WIDE, 20 GAUGE GALVANIZED SHEET METAL STRIP BETWEEN THE BACK OF THE GYPSUM BOARD AND THE FACE OF THE METAL STUD AROUND THE ENTIRE PERIMETER OF THE BUILDING, AS WELL AS BOTH SIDES OF THE CURTAIN WALL. TOP OF STRIP TO BE 93" ABOVE FINISHED FLOOR. REFER TO SHEET A-4 FOR DETAILS OF CURTAIN WALL.
- SEE SHEET P-1 FOR LOCATION OF NON FREEZE YARD HYDRANT AND INSTALLATION REQUIREMENTS.
- INSTALL 1/2" X 4'-0" X 8'-0" AC PLYWOOD HORIZONTALLY WITH THE LONG EDGE ON THE FLOOR AND THE END JOINT CENTERING ON A STUD. APPLY PLYWOOD TO THE FACE OF GYPSUM BOARD WITH SCREWS TO FACILITATE FUTURE REPLACEMENT. SEE INTERIOR ELEVATIONS SEE 3/44 DETAIL.
- SEE SPECIFICATIONS FOR INFORMATION ON ITEMS NOT COMPLETELY DELINEATED ON THE DRAWINGS.

1/8" = 1'-0"

AFN01

FLOOR PLAN NOTES

LOCATION	FLOOR	BASE	WALLS	CLG.	REM.
	SEALED CONCRETE	VINYL TILE	VINYL	QUARRY TILE	GYPSUM BOARD FIBER REINFORCED PANELS METAL DECK GYPSUM BOARD
SALES AREA					
REST ROOMS					

3/16" = 1'-0"

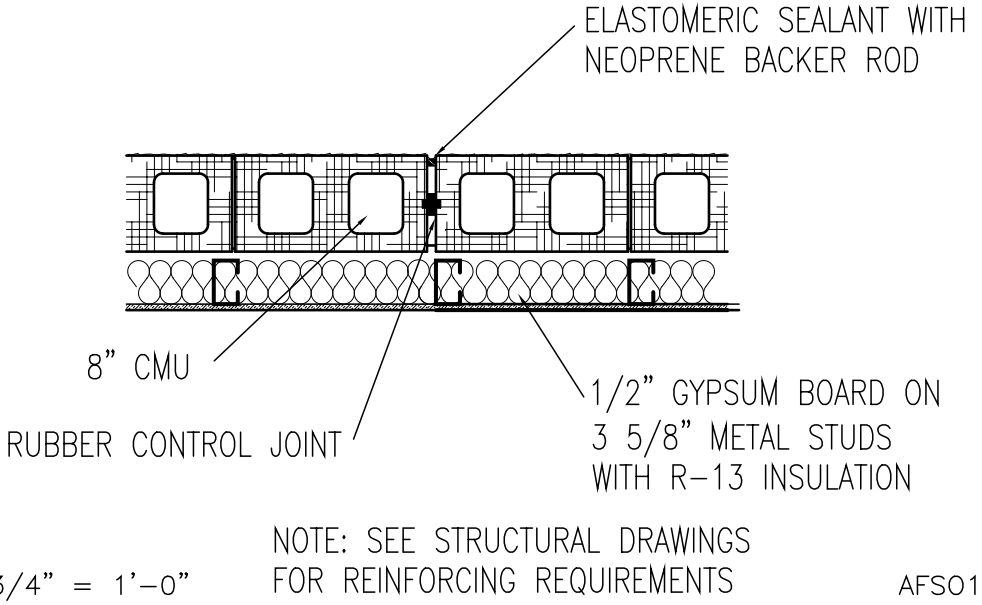
AF001

ROOM FINISH SCHEDULE

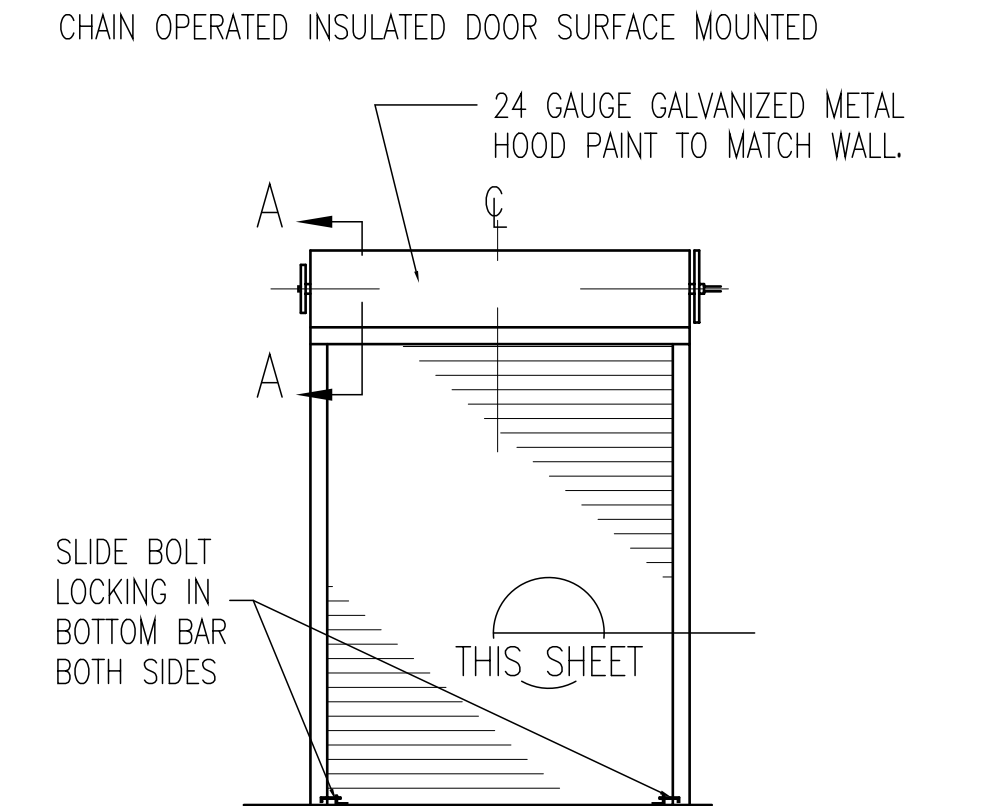
MK	SIZE	TYPE	FRAME	JAMB DETAIL	HEAD DETAIL	ADA / EXIT HARDWARE
A	6'-0" x 8'-0"	STEEL OVERHEAD ROLL-UP	STEEL ANGLE	6:7&8/A1	6&7/A1	
B	3'-0" x 7'-0"	HOLLOW METAL	HOLLOW METAL	8/A1	8/A1	PUSH BAR EXIT DEVICE WILL HAVE AN INTEGRAL SOUNDER
C	3'-0" x 6'-8"	SOLID CORE WOOD UNDERCUT DOOR 1"	HOLLOW METAL	8/A1	8/A1	LEVER HANDLE PRIVACY SETS, CLOSER: LCN #P4041, PLATED FINISH US 280, CLOSER IS PARALLEL ARM AND MOUNTS ON PUSH SIDE OF DOOR
D	3'-0" x 6'-8"	SOLID CORE WOOD UNDERCUT DOOR 1"	HOLLOW METAL	8/A1	8/A1	LEVER HANDLE PRIVACY SETS, CLOSER: LCN #P4041, PLATED FINISH US 280, CLOSER IS PARALLEL ARM AND MOUNTS ON PUSH SIDE OF DOOR
E	2'-6" x 6'-8"	SOLID CORE WOOD PAIR REQUIRED	HOLLOW METAL	8/A1	8/A1	UNDERCUT DOOR 1" (PAIR REQUIRED)
G	3'-0" x 7'-0"	GLASS & ALUMINUM SEE SHEET A-5	ALUMINUM	SEE MANUFACTURER'S SHOP DRAWINGS	SEE MANUFACTURER'S SHOP DRAWINGS	SELF CLOSERS MOUNTED ON THE INSIDE OF BUILDING, CYLINDER LOCKS (KEY OPERATION EXTERIOR AND THUMB TURN INTERIOR), PUSH BARS AND PULLS, SIGN OVER EACH EXIT DOOR TO READ AS FOLLOWS "THIS DOOR TO REMAIN UNLOCKED WHEN BUILDING IS OCCUPIED" 1" HIGH WHITE LETTERS.
H	3'-0" x 7'-0"	GLASS & ALUMINUM SEE SHEET A-5	ALUMINUM	SEE MANUFACTURER'S SHOP DRAWINGS	SEE MANUFACTURER'S SHOP DRAWINGS	SELF CLOSERS MOUNTED ON THE INSIDE OF BUILDING PUSH BAR EXIT DEVICE
J	3'-0" x 7'-0"	GLASS & ALUMINUM SEE SHEET A-5	ALUMINUM	SEE MANUFACTURER'S SHOP DRAWINGS	SEE MANUFACTURER'S SHOP DRAWINGS	

3/32" = 1'-0"

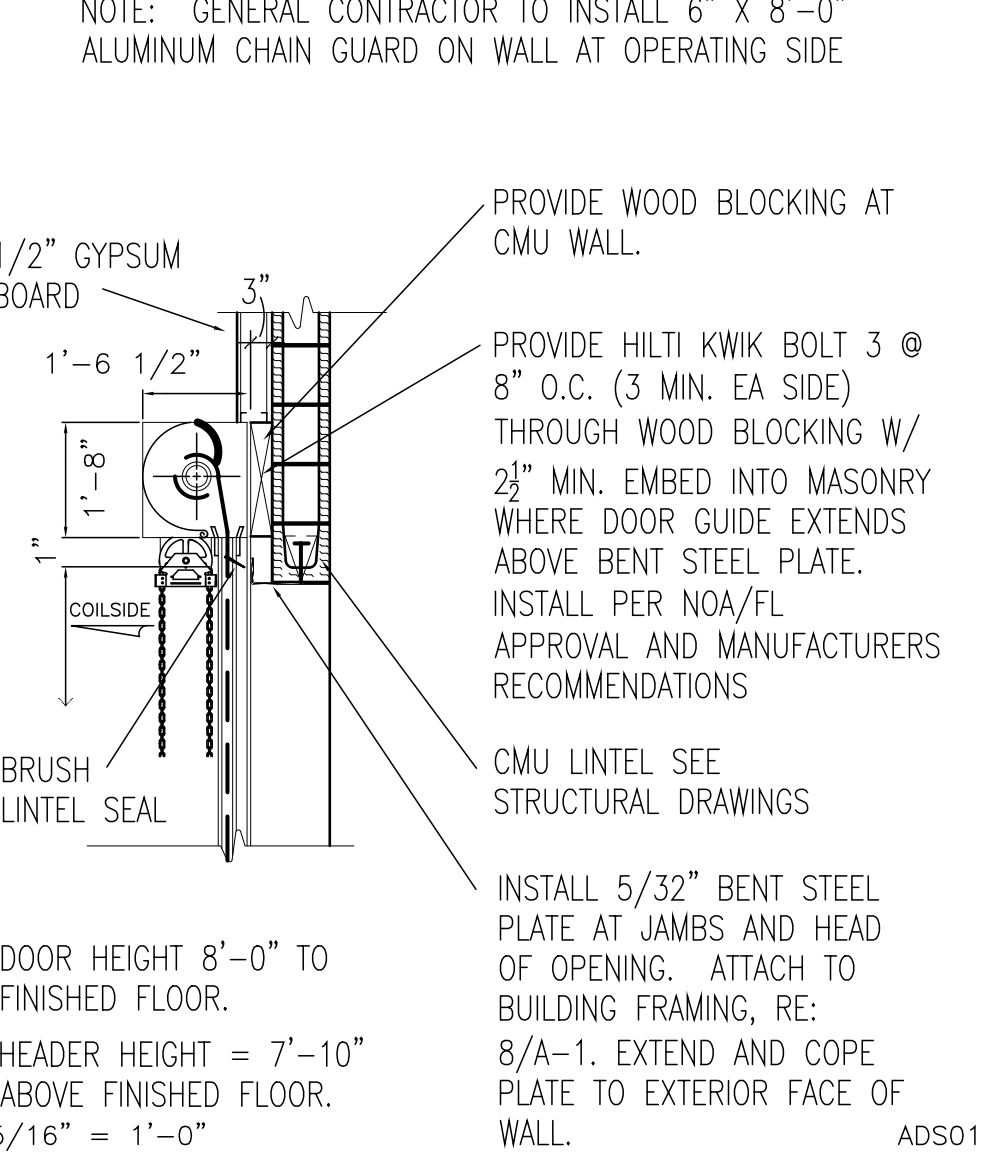
DOOR SCHEDULE - HOLLOW METAL DOORS & FRAMES



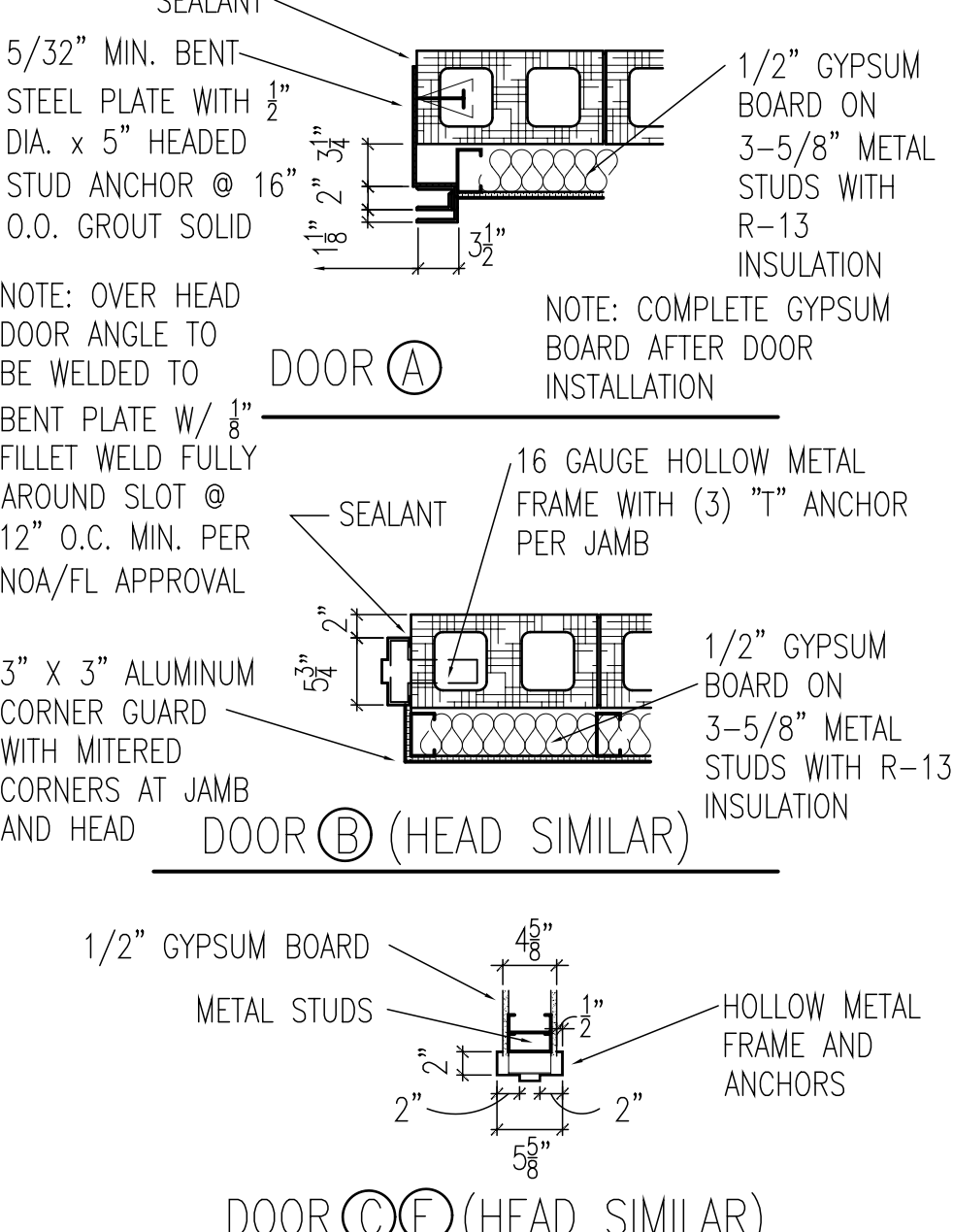
EXPANSION JOINT DETAIL



OVERHEAD DOOR ELEVATION



OVERHEAD DELIVERY DOOR (A)



3/4" = 1'-0"

JAMB DETAILS

REVISIONS

1	2	3	4	5	6
---	---	---	---	---	---

AutoZone Store No. 6365  
3001 WEST ATLANTIC AVE  
POMPANO BEACH FL 33096

Architect: George Callow - License #AR0014155  
123 South Front Street  
Memphis, Tennessee 38103  
TEL: 901-495-8705 FAX: (901) 495-8969  
For Bidding & Contractor Information Contact:  
McGraw - Hill Construction Tel. 615-884-1017  
www.construction.com

George W Callow  
AR0014155  
55 State of Florida  
Digitally signed by George W Callow  
AR0014155  
Date: 2020.02.04 10:47:01 -06'00'

03/19/17

7:00 PM

AR0014155

AR0014155

AR0014155